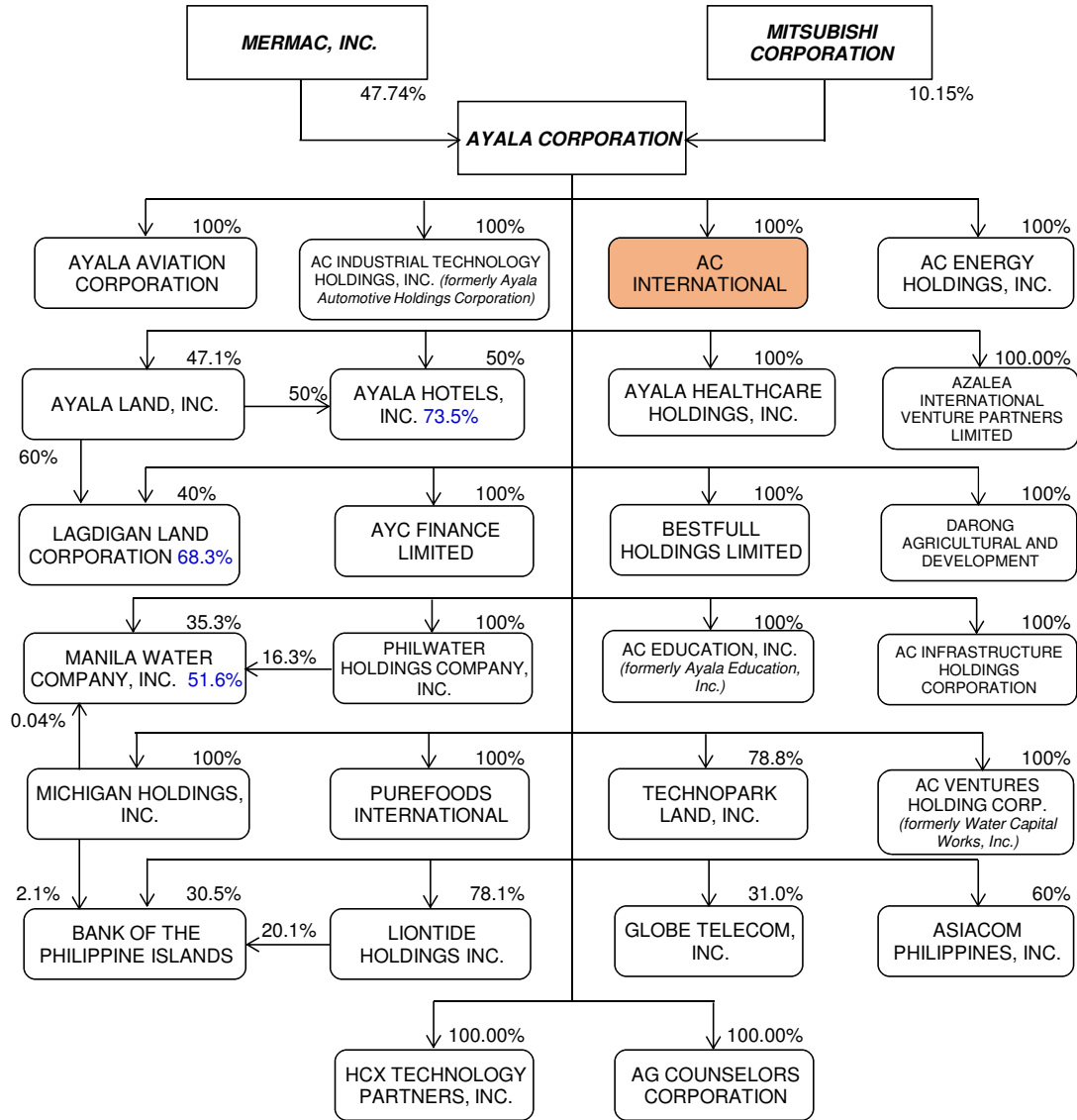


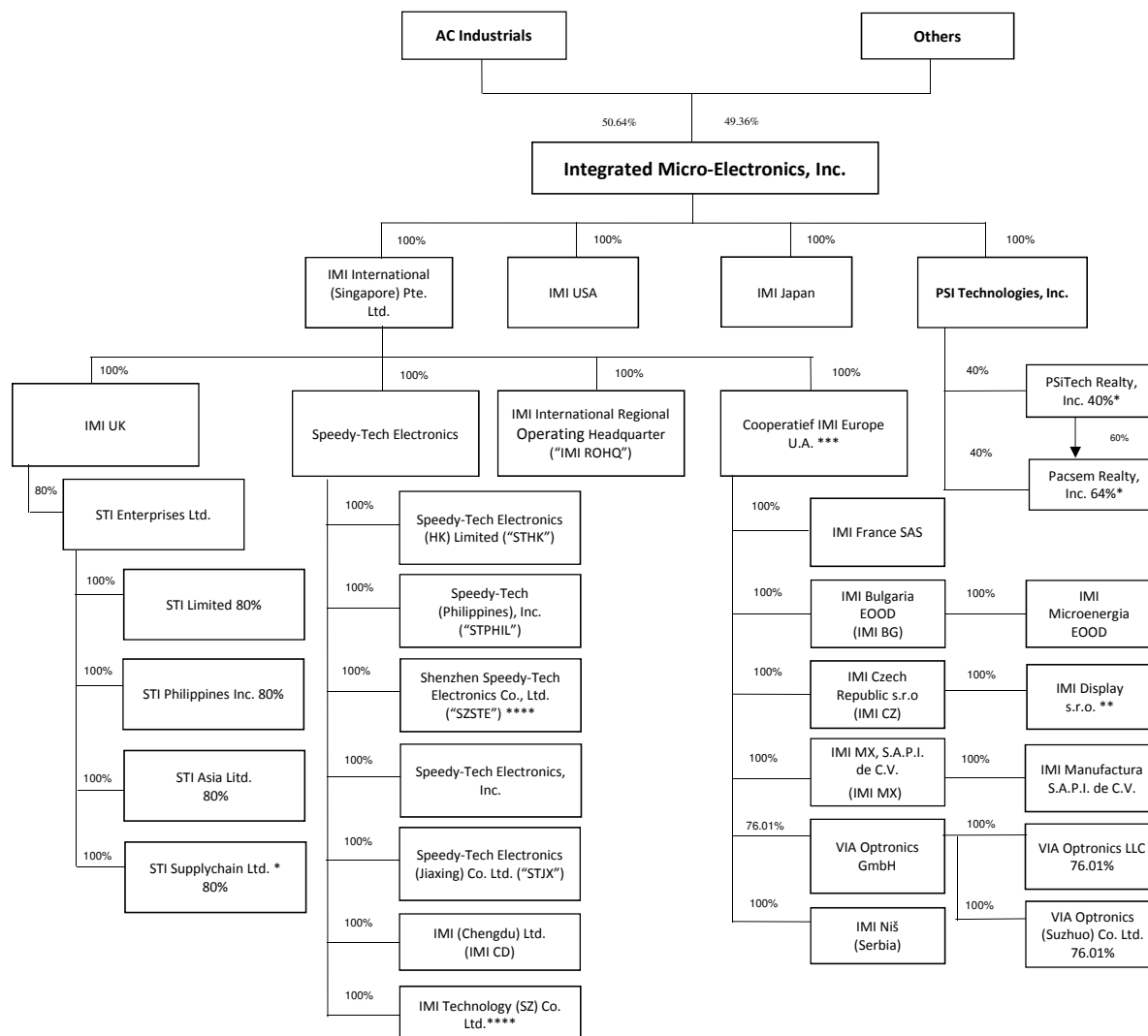
**MAP SHOWING THE RELATIONSHIPS BETWEEN AND AMONG THE COMPANIES IN
THE GROUP, ITS ULTIMATE PARENT COMPANY AND CO-SUBSIDIARIES
As of December 31, 2017**



Legend:

% of ownership appearing on top of the box - direct economic % of ownership
 % of ownership appearing inside the box - effective % of economic ownership

Integrated Micro-Electronics, Inc. as of December 2017



* In the process of liquidation.

** No active operations.

*** Previously under Monarch Elite Ltd. In June 2017, Monarch agreed to sell its net target assets and transfer its membership rights to IMI Singapore. Monarch is in the process of liquidation.

**** New entity incorporated in Shenzhen which now runs the manufacturing operations of Pingshan and Kuichong. SZSTE being sold to a third party.