

GLOBAL FOOTPRINT



RESPONSIBLE MANUFACTURING PRACTICES

We champion sustainable development and responsible business by aligning with global standards such as the Task Force on Climate-related Financial Disclosures (TCFD), Sustainability Accounting Standards Board (SASB), and Global Reporting Initiative (GRI).

Compliant with ISO 14001 (Environmental Management) and ISO 45001 (Occupational Health and Safety).

Ensures ethical sourcing, waste reduction, and minimized environmental impact.

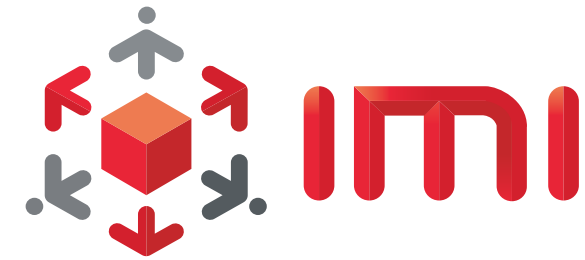
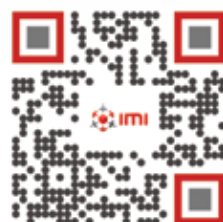
Designs products for sustainability, reducing electronic waste and enhancing recyclability.

Actively engages in initiatives that promote sustainable and responsible business practices.

Integrated Micro-Electronics, Inc.
 North Science Avenue
 Laguna Technopark
 Special Export Processing Zone
 Biñan 4024, Laguna
 Philippines

Connect with Us:

www.global-imi.com
sales@global-imi.com



ENGINEERED FOR
EXECUTION.
 DELIVERED WITH **PURPOSE.**



* IMI Headquarters

OUR COMMITMENT

IMI delivers fast, flexible, and reliable manufacturing solutions through expert engineering, agile supply chains, and integrated operations.

We stay lean and customer-focused with smart automation and advanced testing—maximizing value and responsiveness.

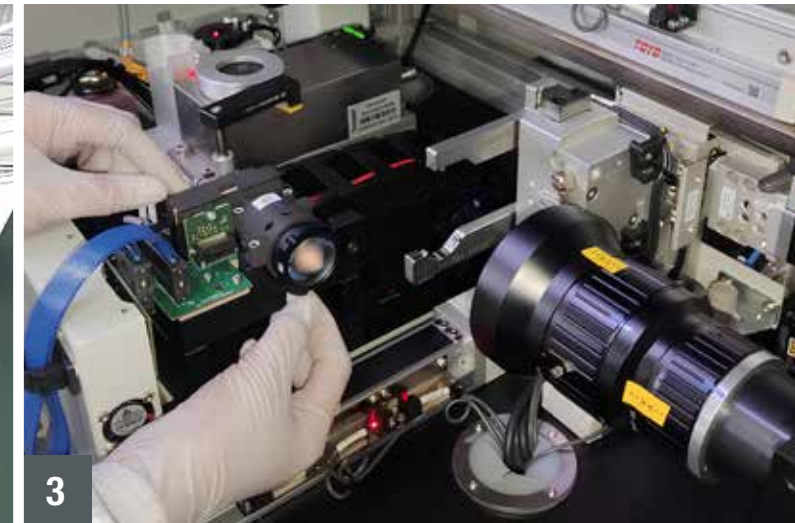
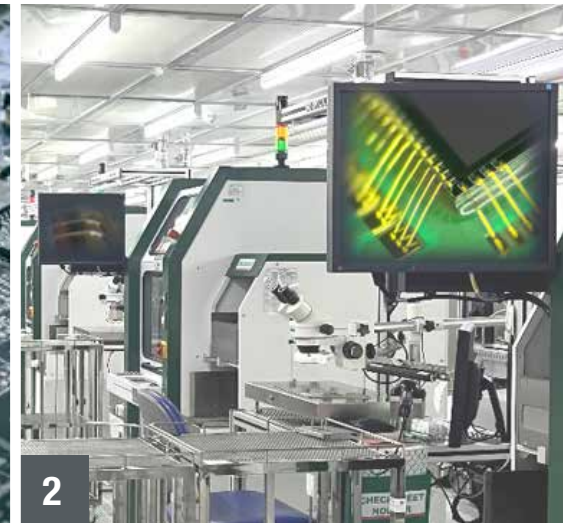
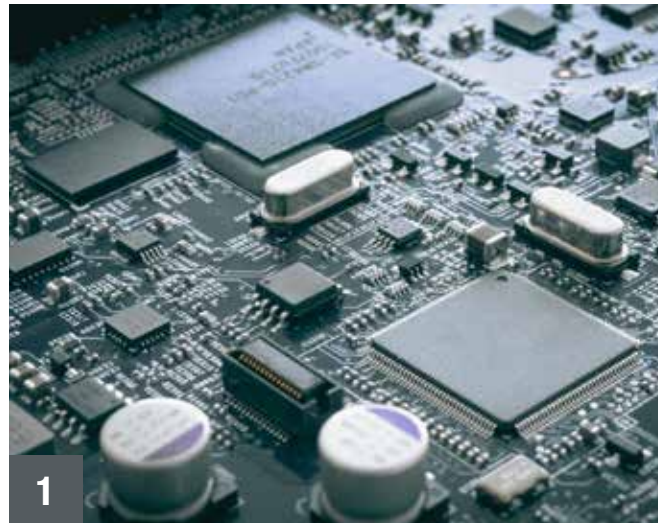
Our commitment to sustainability drives lasting performance for our stakeholders and the planet.

CERTIFICATIONS

- ISO 9001: 2015
- IATF 16949:2016
- ISO 14001: 2015

- ISO 13485:2016
- ISO/IEC 27001:2022
- PNS ISO/IEC 17025:2017

- IEC 61340-5-1:2016
- ANSI/ESD S20.20-2021
- ISO 45001:2018



VERTICAL INTEGRATION CAPABILITIES

1 Advance SMT & Flip Chip (FCoF)	6 Plastic Injection
2 Chip-On-Board (COB)	7 Test Systems and Development (TSD)
3 Camera (Automotive)	8 Analytical Testing and Calibration (ATC)
4 Automation and Robotics	9 Power Discrete and Modules
5 Precision Machining	10 2-Wheel Motorcycle Assembly

